



Dundee-Memorial Park Association Newsletter

"Dedicated to Preserving the Community"

www.dundee-memorialpark.org

Published by Shurson Publishing, Omaha, NE 68131
Vol. 33, No 1 January 2023

Letter From the President

John Ashford Johnnyash5@gmail.com



Hi Neighbor!

Dundee was Omaha's original "west omaha". The village of Dundee was first plotted in 1880 and grew into a rich and vibrant neighborhood over the next 50 years. Dundee was transformed from flat rolling hills into lush grand boulevards and anchored by vast green spaces that now make up Elmwood and Memorial Parks. Dundee's life blood was the streetcar lines that serviced the "far away" western edge of Omaha.

The streetcar serviced commuters from all parts of the city to the village of Dundee. At first, the streetcar was powered by horses and then was electrified in 1892. The streetcar turnaround was located where Brownell Talbot is today. At its peak, the streetcar was wildly popular and used to capacity. Sadly, the last streetcar left Dundee and returned downtown in 1955. Today, we have a memorial to the streetcar and the riders who enjoyed the modern marvel. Buses transplanted streetcars and then cars became the favoured mode of transportation for Omahans. However, the streetcar story did not end in 1955.

The City has approved a modern streetcar line that will run from downtown to midtown. This initial line will not make it into the heart of Dundee, but will change the way that people can get to and from downtown for entertainment, shopping, leisure and employment. Advocates claim the line will pay for itself and spur economic development along the streetcar line. It will also provide another alternative mode of transportation to cars. Detractors are skeptical of the economic benefit, construction, and whether it will be used enough to justify the large cost of the new system. As always, we will watch as the streetcar story develops and can always enjoy imagining vintage streetcars zipping up and down the Dundee business district carrying our neighbors through our bustling neighborhood in the heart of Omaha.

Happy New Years from all of us at DMPA!

Dundee-Memorial Park Association

Board of Directors Officers

John Ashford, President
Johnnyash5@gmail.com

Sara Paesl, Secretary

Nancy Johnson, Treasurer

Committees

Newsletter Publisher/Editor
Ellen Shurson, 402-714-1016
ellenshurson@gmail.com

Street Captain Coordinator
Peter Manhart, 402-350-3890

Membership Data
Sara Paesl, 402-880-7330
sara@dundeebanking.com

Business Liaison
Molly Romero, 402-237-1824
MNA Coordinator, Dave Schinzel
402-551-3742

Library Committee,

Dundee Day Coordinator
Eric Kaplan 678-873-4591

Flower Basket Planting,
Terri Blase terriblase@hotmail.com

Historian - Jim McGee
jim.mcgee.ne@gmail.com

Website
Sara Nelson, sara@secretpenguin.com
Spring Cleanup

Wiff Farrell, wfarrell@ezlifts.com

Welcome Committee
Mibby Schinzel 402-598-2061

Neighborhood Advocates
Jennifer Taylor, jnjtaylor@icloud.com
Thomas E. Gouttierre, 402-305-3827
tgouttierre@gmail.com

Active Past Presidents

Mary Green, 402-415-1081
Sara Nelson, 402-871-4620
Adam Langdon, 402-290-8084
Dave Schinzel, 402-551-3742
Molly Romero, 402-237-1824
Dan Rock, 402-558-4913
B.J. Reed, 402-319-3089
Bob Welk, 402-558-2635

DUNDEE- MEMORIAL PARK ASSOCIATION



Advertisers Index

The Ahlvers Group - Better Homes
Children's Physicians Dundee
Cramer Kreski Designs
Dundee Bank
Dundee Merchants Association
Dundee Pediatrics
eCreamery
N.P.Dodge - Jeff Rensch
Oldenhuis Contracting
Omaha OB/GYN Associates, P.C.
Seasonal Gardens

Please thank these advertisers
their advertising support
makes this newsletter possible.

DMPA Business Members

AAA Window Cleaning, A.B.'s 66 Dundee, Abdo's Business Furniture Cleaning, The Ahlvers Group/Better Homes and Gardens, The Architectural Offices, Better Homes and Gardens Real Estate-The Manharts, Brownell Talbot School, Carlson West Povondra Architects, Cramer Kreski Designs, Matt Dougherty Insurance Agency, Inc., Dundee Barber, Dundee Book Company, Dundee Candle, Dundee Dell, Dundee Digital, Dundee Double Shot Coffee, Dundee Garden Club of Omaha, Dundee Merchants Assoc, Dundee Presbyterian Church, eCreamery, Energy Studio Inc., Edward Jones- Chris Kilroy, Edward Jones-Eric Faurote, ENT Consultants, LLC, Fashion Forward Optical, Film Streams, Joe Finlay Realtor-N.P. Dodge, T. Hurt Construction, Sara Rogers Photography, Kris K9 Kleanup, Lewis & Clark Jr. High, Marks Pantry & Bottle Shop, Val McPherson, Gallup Certified Strengths Coach, McMillan Antiques, Oldenhuis Contracting, Inc., Omaha OB/GYN Associates, P.C., One Tree Yoga, Porches With Pizzazz, R G Paint and Decorating Inc. Sustainable Lawn and Landscaping, Sun Valley Landscaping, Terry Wilwerding, DDS, Webster Designs Assoc.

To join as a business member, send dues with the form on the inside back page. Please send to: Sara Paesel address below.

The Dundee-Memorial Park Association Newsletter is published monthly by Shurson Publishing. Direct all advertising inquires to 402-714-1016. Send all articles for submission and press releases to Shurson Publishing, 131 N. 31 Ave, Omaha, NE 68131, e-mail to ellenshurson@gmail.com to arrive by the 15th of the month preceding publication. Content may be edited for clarity and space considerations. No warranties of the products or services printed herein are expressed or implied by either the DMPA or Shurson Publishing.

Memberships please send the form on the inside back cover to:
Sara Paesel, 609 So. 55th St., Omaha, NE 68106.
Questions call 402- 880-7330 or email: sara @dundeebanking.com



SUPPORT LOCAL



"Dundee Bank is by far the best bank I have ever experienced! They are so focused & supportive of local businesses & community, they are truly shaping the character and experience of Omaha!"

Meghann Schense
The Grove Juicery

At Dundee Bank, we believe supporting the local community boosts the economy and strengthens small businesses across all industries. That's why when you bank with Dundee Bank, we're proud to say that nearly 100% of your deposits are filtered back into the community through loans that support individuals, small businesses, and revitalization of neighborhoods through people like Meghann Schense at The Grove Juicery.



Give back to the community today by opening an account with Dundee Bank at dundeebanking.com.

Blackstone, Dundee, or give us a call at 402.504.4000

charities events business development makers youth artists

The 2023 DMPA Pictorial History Calendar Summary

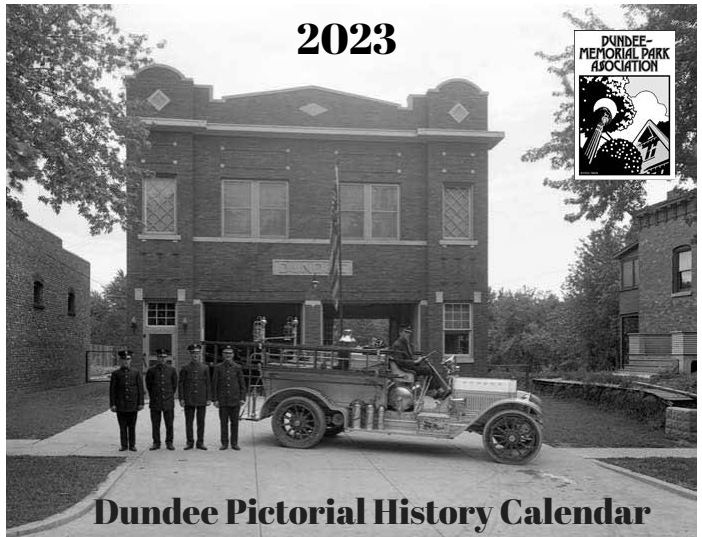
Thank you to those who purchased the Dundee Memorial Park Association's 2023 Dundee Pictorial History Calendar.

Also, thank you to AB's, the Dundee Bank, and the Elmwood Pharmacy for selling the calendars and for being good neighbors. Our publisher, Ellen Shurson, did a remarkable job in a very short period of time. The publication is nearly sold out in only four weeks.

The \$15.00 pictorial history calendar was first offered for sale at the November 14, 2022 DMPA neighborhood meeting at Brownell Talbot. AB's, the Dundee Bank, the Elmwood Pharmacy, Lights on Dundee and the DMPA website were other outlets. Calendars were mailed to out-of-town customers in Vermont, Texas, North Carolina and Nebraska.

Publishing rights to most of the photos in the calendar were purchased from the Durham Museum. Cate Kratville Wrinn allowed us to use one of her dad's, William Kratville, famous streetcar photos. The public domain John Savage photo of President Truman laying a wreath at the dedication of Memorial Park on June 5, 1948 was purchased from the Truman Museum.

Proceeds from 2023 calendar sales will go to the neighborhood association. Some proceeds will be used to purchase the rights to a dozen more photos and publishing software for the 2024 calendar. The 2023 calendars will continue to be sold at AB's, the Dundee Bank, and the Elmwood Pharmacy until the very limited supply is exhausted. Any questions? Email jim.mcgee,ne@gmail.com



Dundee Flower Basket Donations

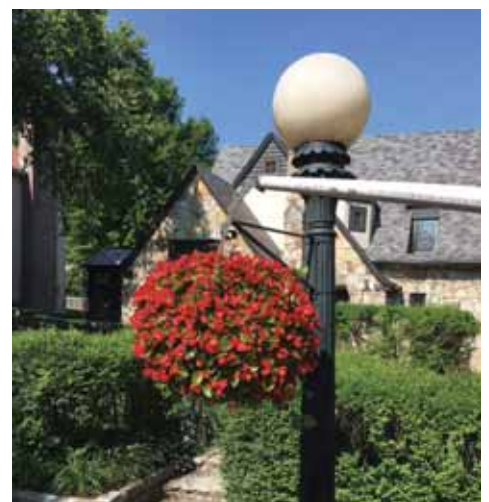
You can donate online at: dundee-memorialpark.org

Please give as little or as much as you like. If you live in Dundee/Memorial Park, or love DMPA, I'm talking to you. What would the neighborhood be without the beautiful baskets. Twenty five years and counting!!

Don't forget to provide your address so I can apply it to your block and your contact info.

If you want to send a check via mail, my address is Peter Manhart, 312 S 57th St, Omaha, Ne, 68132

Our email address is: dundelemorialparkinfo@gmail.com





THE BARRE CODE DUNDEE

5002 DODGE ST #301, OMAHA, NEBRASKA

A SAFE PLACE FOR EVERY BODY

Go beyond the barre with our all-in-one program: Barre, Bootcamp, and Brawl. Sweat under neon lights to music that drives you, and be led by passionate instructors. Buy an unlimited monthly membership anytime in January and pay only \$1* for your first month. Email us at dundee@thebarrecode.com for more information.

The Barre Code



THEBARRECODE.COM/NE-OMAHA-DUNDEE

KEEP DUNDEE CHARMING | SUPPORT YOUR DUNDEE MERCHANTS

eCREAMERY
ICE CREAM & COOKIES

Dundee Parlor

5001 Underwood Avenue
Omaha, Nebraska 68132

OPEN DAILY



Local Pick Up Available at
Dundee Parlor & eC HQ

Special occasion gift collections, single pints, cookies & more!

Order local pick up and get

\$5 OFF

any 4 or 8 pint ice cream collection.
Use discount code at checkout:

5OFFPICKUP



ORDER NOW!
eCreamery.square.site

Offer good for \$5 off any 4 or 8 pint ice cream collection purchased on <http://eCreamery.square.site>. Use discount code 5OFFPICKUP at checkout. Offer cannot be combined with other offers or be applied to previous purchases.




seasonalgardens
LANDSCAPING

Holiday Lighting

Design, Install, Takedown & Storage

Snow Removal

Full Service for Residential & Commercial

Lawn & Landscape Maintenance

Fall cleanup, Perennial cutbacks, Rejuvenation pruning, Gutter cleaning

Landscape Design & Install

Planting, Landscape lighting, Fire pits, Paver patios, Natural stone, Water features, Retaining walls, Drainage solutions

For More Information:

Contact Matt at 402-213-4004, seasonalgardens@hotmail.com
or visit seasonalgardens.com

Becoming Memorial Park, 1871-1948

Timeline compiled from the Omaha Bee News and the Omaha World Herald By Jim McGee

The Happy Hollow After J.N.H. Patrick settled in Omaha in the 1850s from Pennsylvania, he became wealthy through land speculation and development. The 800-acre Patrick farm west of the city was given the name the "Happy Hollow." He built a large wood frame house on the site in 1871; and in 1885 a second, larger house was built. In 1886, Patrick joined the two homes with an immense, 2-story "great hall" with exterior porches and gables. The first golf course in Nebraska was the private 9-hole course used by J.N.H. Patrick's sons, Bob and John Patrick, and a few pals. Alec Findlay laid out the course and taught the game to the boys. The players used the gutta percha ball on the crude course that extended from Dodge to Underwood. The Patrick boys had a bachelor's quarters in a separate house which they used it as a clubhouse.

1905-1907, "the Grape Juice Club" John Nelson Hayes Patrick passed away at his Happy Hollow home on January 29, 1905. Following Patrick's death, eleven businessmen led by Mr. Erastus A. Benson purchased the 33-room mansion and 11 acres. In 1907, the eleven held the first stockholder meeting and adopted the Articles of Incorporation. The very first resolution, was to ban the selling of any form of alcohol on the club grounds. The alcohol ban did not deter growth of the club and membership grew rapidly and steadily. Happy Hollow was dubbed "the grape juice club." The Happy Hollow Club opened its doors on July 20, 1907. The Club had a fifteen-year lease until 1922 on 90 acres just west of the clubhouse. The club was unable to obtain an option to purchase the golf course land.

1921-1922 Brownell Hall bought the Patrick mansion and 11 acres in 1921. A temporary arrangement was made with Brownell to share the buildings with the Happy Hollow members. Brownell would conduct school during the regular school year and the Happy Hollow Members would have use of the facilities during the summer months. In 1922, the Happy Hollow Club purchased property on West Pacific and moved west.

C.C. George purchases golf course Upon coming to Omaha in 1885, C.C. George devoted much of his time to the advancement of the city. George was instrumental in the development of the Dundee, Happy Hollow, and Fair Acres districts and the erection of the City National Bank building. At the time of his death in 1940, he was pursuing the Dundee Golf course addition. George purchased the golf course property in 1924 and leased to Clyde Buell who operated it as the Dundee Golf course. Henry Glissman, a Douglas County farmer who, operated two "Pay as you Play" golf courses, took over the lease from Buell in 1930. The links was successful until homes were built west of the creek and the course was reduced to 9-holes.

1939 C.C. George tells of plans for Dundee site. George went to the Planning Board with his "million-dollar" development plan for the golf course property, promising a commercial area of "high class shops" akin to the Kansas City Plaza on the abandoned Dundee Golf property. The plaza was to be on the north side of Dodge Street, 500 feet west of Happy Hollow Boulevard. There would be a 750-foot-long, 300-foot-deep commercial plaza with 13 buildings on Dodge; and a 260-foot-deep apartment complex behind the commercial plaza. The addition would have 145-150 Georgian or colonial-style homes throughout the rest of the property. There would be a driveway from Dodge to the commercial district of "high class shops" of Georgian or colonial architecture corresponding with that in the residential section. A "B" zone permitting apartments behind the commercial strip would extend 260 feet. Opponents packed the hearing but they were not opposed to the residential development, only the commercial and apartment strip. There were to be 145-150 lots in the subdivision with circular, rolling streets and systematic landscaping.

The Planning Board dealt George a blow when it recommended that the area roughly bounded by Howard, Cuming, the city limits, and 72nd Street be zoned exclusively residential. Businesses already in place and strips occupied by filling stations at 72nd & Dodge would be excepted. An ordinance was drawn up in accordance with the Planning Board's recommendations.

The Dundee Realty Company said that they would probably drop plans for development of the Dundee Golf Course tract if zoning recommendations of the City Planning Board were approved by the City Council. Placing the tract in an exclusive residential zone would doom the project, according to company attorney W.C. Fraser. Fraser publicly questioned the legal authority of the city and went to court. The supreme court upheld the city's authority to limit zoning to residential only.

March 14, 1939 250 West Dundee residents crowded the council chamber. Hisses and applause punctuated the city Planning Board hearing whether commercial and apartment zones should be allowed in the project to subdivide the Dundee Golf course. The opposition was only to the commercial and apartment zones. Dundee Realty attorney W.C. Fraser said objections were the result of a misunderstanding.

Becoming Memorial Park, 1871-1948

Timeline compiled from the Omaha Bee News and the Omaha World Herald

By Jim McGee

March 22, 1939 Zoning still undecided for Dundee Realty's request for commercial and apartment zones in its Dundee Golf course subdivision development plans. George Prinz, chairman of the Planning Board, said there were merits on both sides of the proposition. Prinz said no further public hearings or outside advice were needed.

March 30, 1939 City experts urge no commercial zoning for Dundee.

January, 1944 Mrs. Broad's letter cited

The suggestion of a World War II memorial for the service men and women of Douglas County and vicinity to be paid for by the men, women, and school children of Omaha was first made by Mrs. J.W. Broad, 315 North 38 Avenue to World Herald publisher Henry Doorly in January, 1944. Mr. Doorly pitched the idea to some businessmen at a luncheon with all present giving unanimous approval. Storz Brewing Company vice president Robert Storz and Byron Reed's Linn Campbell were appointed as a committee to investigate and advise what could and should be done by the people of Omaha in providing a memorial. Elmwood Park's highest elevation on the south side was proposed by the War Mothers for a War Memorial in 1925. Nothing developed at the time.

A grouping of canons around a Civil War statue in the town square had always been a way of expressing gratitude to veterans. In the 1940s, more practical and beautiful ways of paying tribute to veterans emerged. One of the best was "living memorials." It was the vision of the World War Memorial Association of Omaha to transform the vacant, weed-filled Dundee Golf Course into a living memorial. A committee decided that the park was "the most referential" of several projects considered. A city auditorium was a leading suggestion with a \$3 million price tag that was deemed too costly and risky. The proposed 65-acre shrine would be in the nature of a park with shrubbery and flowers to become a "living memorial to Douglas County women and men in the armed services."

March 26, 1944 The Dundee Golf course was used for 280 Victory Gardens for the second year. A series of meetings for garden leaders was held at Benson Library.

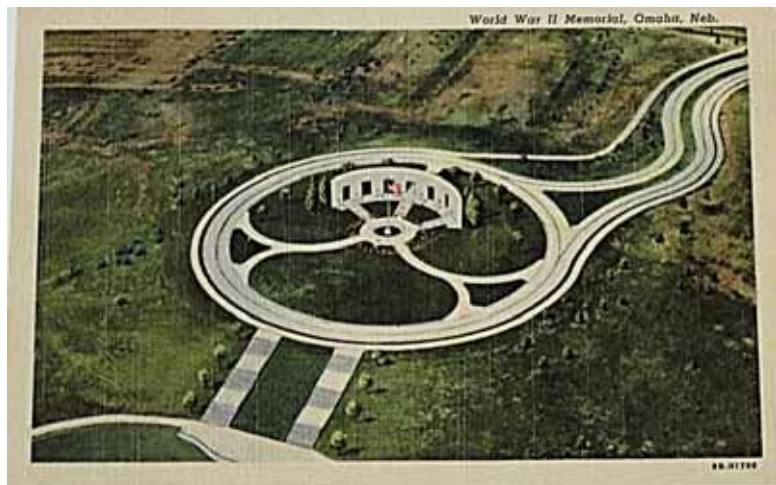
August 19, 1944 The Planning Commission asked for the condemnation for the abandoned Dundee Golf Course for a for a boulevard and parkway system. A proposed 65-acre shrine would be in the nature of a park with shrubbery and flowers to become a "living memorial to Douglas County women and men in the armed services." The design of Memorial Park would be of the most modern concepts in city planning and beautification; and was seen as "the first important step toward the more beautiful Omaha of tomorrow."

November 8, 1944, World Herald editorial *"Those who approach Omaha on Dodge Road from the West gain a pleasant first impression of our city. There are good residential sections, the campus of the University of Omaha, St. Margaret Mary's Church, and Elmwood Park.*

To these civic beauty spots another is being added, a 65-acre park that will serve as a living memorial to those who took part in the present war.

While there is much good in the old American custom of grouping a few cannons around a civil war statue in a town square -good because it was a sincere expression of pride and gratitude- we have learned in late years there are more beautiful and more practical ways of paying tribute.

One of the best of these is the living memorial. Trees, shrubbery, and flowers are warmer than bronze. Even little children to whom war and sacrifice mean nothing can appreciate the warmth and beauty of a living, growing memorial such as this one.



Such a park as the one now being planned is in keeping with the new concept in city planning and beautification. We know that in the post-war years the trend toward spreading out will be accelerated. The demand will be for more landscaped boulevards, parks, and parkways, not only in older, blighted areas, but throughout the city.

The war memorial that will blossom on the site of the old Dundee golf course may well be the first important step toward the more beautiful Omaha of tomorrow."

Becoming Memorial Park, 1871-1948

Timeline compiled from the Omaha Bee News and the Omaha World Herald
By Jim McGee

February 11, 1945 “Every Omaha Employer Has a Chance to Help War Memorial Fund “

Junior Chamber of Commerce members contacted every employer with a payroll of 50 or more to appoint a captain to collect contributions. The Omaha War Mothers opened a booth at 16th & Farnam to receive contributions. Industrial and commercial plants were asked to contribute \$5 for every employee who was in the service. Some were contributing \$100 for employees who perished. Robert Storz said that everyone who made a contribution card through the organization or at the Omaha War Mothers booth would receive a membership in the World War II Memorial Park Association.

Storz: “A Living Memorial” Every service man or service woman for whom \$5 was contributed would receive an appreciation certificate from the World War II Memorial Park Association. The Association was asking offices and plants with fewer than 50 employees to appoint their own captains, collect contributions, and send them to Treasurer James Lee in the Service Life Building. The campaign, led by Robert Storz, raised \$262,000. When the park plan was submitted to the public by the World War II Memorial Park Association, Storz emphasized the park was a “living memorial to the living men and women of the armed forces as well as those who make the supreme sacrifice.” There had been a misconception that the park would be a memorial only to those who lost their lives in the service. The park was offered as a gift and accepted by the City Council after a yearlong study by a committee of local businessmen. The names of the 950 Douglas County residents who perished in World War II are inscribed on plaques placed on the colonnade. President Harry Truman laid a wreath at the dedication of Memorial Park on June 5, 1948. “All the boys and all the girls, and all the men and all the women who made a contribution to the winning of this war did it because they had an ideal. They believed, and I believe, that that ideal is a peace in the world for all the world, and the fundamentals of that peace...If we make this peace what these young men who died believed it would be, they will not have died in vain. And with this memorial ever before you, you in Douglas County can always look forward to the accomplishment of that ideal.”

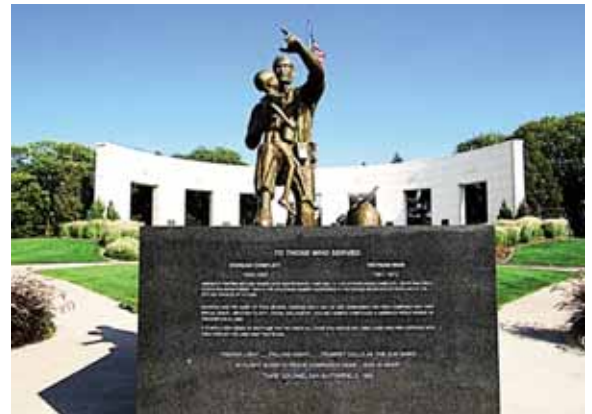
The Rose Garden was added north of the colonnade in 1959.

1,800 labeled rose bushes were donated by the Omaha Rose Society. No other rose garden of its type had been attempted in the Midwest. The garden included a sculpted centerpiece, walks, four beds of hybrid tea roses, seven beds of tea roses interspersed with square cut block of evergreens, hardy shrub rose, lilacs, and Douglas firs.

The Victory '95 Memorial, the Airborne Memorial, the Marine Medallion, Medal of Honor, and the Korean POW Monument were dedicated on May 29, 2021.

The lengthy list of donors included labor unions and councils which provided funds, materials, and skilled craftsmen and labor. The Korea-Viet Nam Peace Memorial honors 99 Douglas County soldiers who died in the Viet Nam War, 87 who died in the Korean War, 22 Viet Nam POW-MIAs, and 57 Korean POW-MIAs. The Korea-Viet Nam peace memorial stands south of the WWII monument. It replaced one of another design that had deteriorated and was considered beyond repair.

Memorial Park was re-dedicated on its 50th anniversary in 1998. 150,000 visitors filed through the park on Memorial Day weekend that year to view the traveling Viet Nam Memorial Wall.





Dundee
4825 Dodge St.

Jamie A. Drake, M.D., F.A.A.P.
Jillyn A. Kratochvil, M.D., F.A.A.P.
Erin A. Loucks, M.D., F.A.A.P., I.B.C.L.C., R.L.C.
Michael J. Moore, M.D., F.A.A.P.
Patrick J. Specht, M.D., F.A.A.P.

955-7676

M-F 8:30 a.m.-5 p.m.
Sat. 8:30 a.m.-noon
Ask about our extended hours.
Access us online via Children's Connect.
ChildrensPhysiciansOmaha.org

AV Sorensen Community Center

4808 Cass St. | (402) 444-5596 | parks.cityofomaha.org
Hours: Monday-Wednesday 9am-6pm, Thursday 9am-8pm, & Friday 9am-2pm

Need a space to stay active over the winter months? Look no further than AVS! Ages 55+ are eligible to utilize the facility free of charge. This includes access to the weight room and gym anytime we are open. Escape the elements and walk in the gym for free 9am-10am. Adults can use the weight room or gym for a small fee of \$3/day or purchase multi visit passes; 10 visits for \$20 or 20 visits for \$30. New to AV Sorensen is Pickleball! We will have 3 courts available for open play on Tuesdays 4-6pm, Wednesdays 12-2pm, and Fridays 10am-12pm.

Visit us online to explore all we have to offer!

Interested in a part time or seasonal position with Omaha Parks & Recreation? We are now hiring for the summer of 2023! We are looking for lifeguards, camp counselors, tennis instructors, pool cashiers, front desk staff, and scorekeepers.

Visit parks.cityofomaha.org/employment for more information, sign up for your interview, and to apply!

If you have any questions please email me at jacob.higgins@cityofomaha.org.



DIY Gingerbread House Contest

Winners will appear in the February Newsletter

Cramer Kreski Designs
Residential Architecture For Fine Homes

Steve Cramer Joseph Kreski A.I.A.

Remodels • Personalized Homes • Additions
Kitchens • Baths

402-333-8334

Please visit our website!

WWW.CRAMEKRESKIDESIGNS.COM

DMPA Online

www.dundee-memorialpark.org

Facebook : Dundee Memorial Park

Twitter: DundeeMemorial

To advertise email: ellenshurson@gmail.com
or call 402-714-1016



Board Certified Physicians

Normal and High Risk OB, Gynecology,
Advanced & Minimally Invasive Female Surgery,
Infertility, Menopause, Osteoporosis,
Pelvic Pain & Sexual Medicine, and Specialized
Counseling Services.

Frank D. DeVries, MD Nick Steinauer, MD

Linda M. Collins, MD Jill K. Burke, DO

Andrea M. Leishman-Barb, DO Jennifer L. Hill, MD

Melissa Dahir, DNP



Jackie McNichols, APRN Jullie Greenwood, APRN

Wendy Salado, APRN Katherine Linehan, APRN

Abby Saunders, LIMHP, LADC Veronica Olson, LMHP, LPC

Passion For Patient Care at Every Stage of Life.

WEST OMAHA

16909 Lakeside Hills Court, Suite 201
Omaha, NE 68130 - (402) 991-1900

EAST OMAHA

119 N 51st Street, Suite 200
Omaha, NE 68132 - (402) 932-8020

www.OMHAOBYGYN.com

SOLD

When you want your home sale nailed, call Jeff.

Call 391-JEFF · midtownomahaprices.com

Dr. Andresen | Dr. Christner | Dr. DiRenzo-Coffey | Dr. Davey

dundee pediatrics

5018 Underwood Ave Suite #200, Omaha, NE 68132
Phone: (402) 991-5678 | dundeepediatrics.com



Residential Remodeling & New Construction
4501 Leavenworth Street
Oldenhuiscontracting.com
info@oldenhuiscontracting.com
office: 402-573-8125

DMPA Online

www.dundee-memorialpark.org
Facebook : Dundee Memorial Park
Twitter: DundeeMemorial
To advertise email: ellenshuron@gmail.com
or call 402-714-1016

Recent Midtown Homes Sold

Sold Price	Address	Br	B	G	Style	Sq Ft
"\$245,000"	4819 Cuming St	3	2	1	1.5 Story	"2,004"
"\$260,000"	5008 Nicholas St	3	3	1	2 Story	"1,630"
"\$272,000"	4816 Harney St	3	3	2	2.5 Story	"1,482"
"\$280,000"	4913 Burt Street	3	3	1	1.5 Story	"1,360"
"\$285,000"	509 S 51st Street	2	2	1	2 Story	"1,602"
"\$580,000"	530 S 53 Street	4	4	2	2 Story	"3,116"
"\$580,000"	505 S 52 Street	3	2	2	2 Story	"2,818"
"\$615,000"	1115 N 56th St	4	3	2	2 Story	"2,720"
"\$725,000"	658 N 58th St	4	4	2	2.5 Story	"2,992"
"\$292,000"	109 S 68th Ave	2	3	1	R Ranch	"1,847"
"\$297,500"	4806 Harney St	2	2	1	1.5 Story	"1,726"
"\$325,000"	116 S 49th Ave	5	3	2	2.5 Story	"2,129"
"\$370,000"	4921 California St	4	2	3	1.5 Story	"1,918"
"\$380,000"	302 S 49th St	6	2	2	2 Story	"2,688"
"\$400,000"	312 S 50 Ave	3	2	2	2 Story	"2,002"
"\$400,000"	907 Dillon Dr	2	2	2	1.0 Story	"1,233"
"\$455,000"	6241 Underwood	4	4	2	2 Story	"2,922"
"\$528,500"	345 S 70 Ave	4	3	6	1.0 Story	"3,671"
"\$740,000"	103 N 54 St	5	5	2	2.5 Story	"4,663"
"\$790,000"	5913 Jones St	4	4	2	1.5 Story	"4,753"
"\$250,000"	906 N 49 Street	4	2	2		"2,379"
"\$279,000"	5014 Nicholas Street	5	2	1		"2,076"
"\$293,500"	502 S 68th Street	4	2	1		"1,802"
"\$295,000"	529 S 51st Avenue	2	2	0		"1,828"
"\$331,510"	5022 IZARD Street	4	2	2		"2,330"
"\$401,500"	5152 Jones Street	3	3	1		"2,376"
"\$550,000"	6625 Burt Street	4	4	2		"3,059"
"\$720,000"	6244 Glenwood Road	4	3	2		"3,870"

Dundee Classified /Want Ads



Contact Matt:
402-213-4004
seasonalgardens.com

Winter Services

Yard Cleanup, Rejuvenation Pruning, Gutter Cleaning

Landscaping

Planting, Landscape Lighting, Paver Patios, Natural Stone, Water Features, Retaining Walls, Fire Pits, Drainage Solutions

Reserve this spot
for next month

For pennies per household.
ellenshurson@gmail.com

Classified Advertising Rates: \$8 for three lines plus \$2 for each additional line. \$14 for a three line ad run for two consecutive months. 25 characters per line, count all spaces & punctuation. Submissions will be edited to fit contracted space. **Send check to Shurson Publishing, 131 N. 31 Avenue, 68131. For Display ad rates Send request. Email: ellenshurson@gmail.com or call 402- 714-1016.**

Please Check
Your Mailing label

Please renew before your membership lapses.
Multi-year memberships are available.

Newsletter Deadline

The 15th of the preceding month
for all advertising and article submissions.
(check for possible extension.)

Dundee-Memorial Park Association Membership Form

Name (s) _____

Address: _____ Zipcode _____

Phone _____ E-mail: _____

Multiple year membership discounts :Neighbor 2 year - \$20, Senior 2 year -\$10, Business 2 yr \$30

Yes, you may list my name in the newsletter as a ___new member ___ renewal.

Send form (Photocopy acceptable) and checks made out to DMPA to

Sara Paesl 609 S. 55th St, Omaha, NE 68106

_____ I would like to learn about volunteer opportunities.

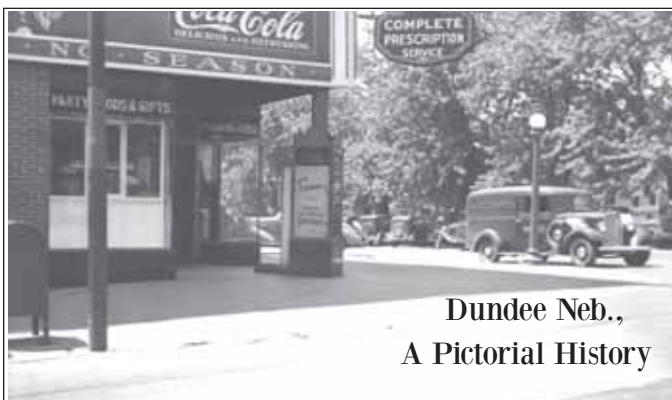
**Annual
Membership
Dues:**
Neighbor \$12
Senior \$6
Business \$20
**Multiple year
discounts available**



Shurson Publishing
131 N. 31 Avenue
Omaha, NE 68131

PRST STD
US POSTAGE
PAID
Omaha, NE
Permit 1638

To avoid delay... Please send all membership renewals to address on membership form, on the other side of this page. **Please. DO NOT** send membership forms to the address above.



Dundee Neb.,
A Pictorial History

Hundreds of fabulous photos & historical facts
\$47 hardcover collector's edition And now a
limited number of soft cover edition for \$37. Available at
Dundee Bank 50th & Underwood,
Or by mail order from Shurson Publishing,
pay with venmo, delivery within neighborhood.
email: ellenshurson@gmail.com
Or call 402-714-1016, leave message.

→
Don't wait to buy **real estate**.
Buy **real estate** and wait. *Let's chat*

Better Homes & Gardens
The Ahlvers Group
#402.301.7653
www.theahlversgroup.com
resource • reference • realtor

The logo for The Ahlvers Group, featuring a stylized house icon inside a circular border with the text "The Ahlvers Group" around it.

To advertise in this newsletter,
email: ellenshurson@gmail.com
or call 402-714-1016